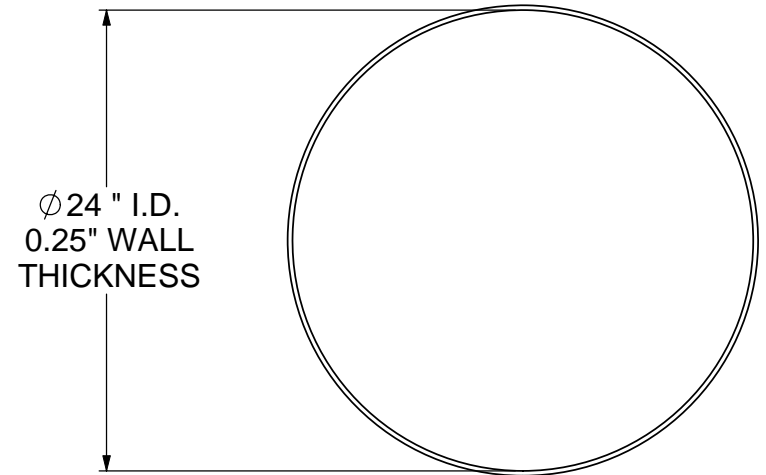
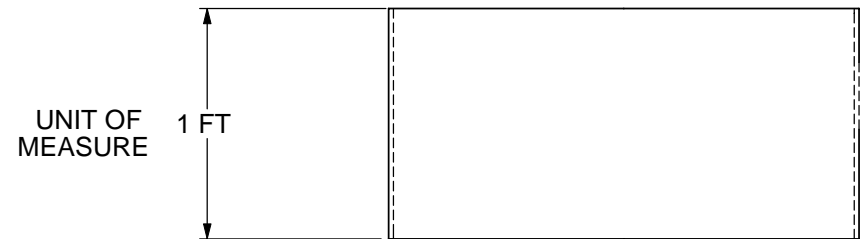


FIBERGLASS EXTENSION COLLAR

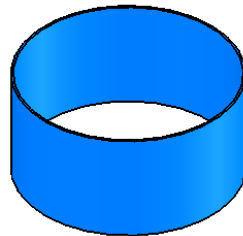
- Designed to mate to Green Turtle Tanks to connect underground tank access to grade level.
- Fiberglass Reinforced Plastic extension collar shall have a 588 mm (24 in.) inner diameter, a minimum wall thickness of 6.35mm±1.5 mm (0.25 in±1/16")
- FRP shall comply with the applicable material requirements of CSA B66 and shall be tested for corrosion resistance by exposure to adverse conditions in accordance with ASTM C 581
- FRP shall be capable of withstanding liquid temperatures of 70°C (160 °F) without deforming
- Minimum weight is 18.8 kg/linear meter (12.7 lbs per linear foot).
- To be factory sealed to fiberglass access frame and cover, or sealed on site to cast iron frame and cover
- To be bonded to the FRP interceptor during installation using Sikaflex 255 FC or 221. Sikaflex has been tested to provide an exceptional FRP to FRP seal. Use of substitute bonding material or non-FRP materials for the extension collar may jeopardize this seal, potentially resulting in water infiltration or waste exfiltration from the system.
- Order extension collar with tank. For quantity calculation, see Drawing "Collar Height". Quantity based on invert elevation below grade. Trim on site to fit.
- Use as a single continuous length for structural integrity. Green Turtle does not approve of joining two pieces of 24" dia extension on one accessway.
- 0.92 m. dia size (3 ft.) EC3 also available for 2.37 m dia. (92") tanks. EC3 recommended for Proceptor units with coalescers or tanks requiring frequent access. EC3 requires a 0.92 m dia. (36") tank neck with a 0.92 m x .59 m (36"x 24") reducer to mate to FC FRP B or FCH G4 frame and cover at grade.



TOP VIEW



SIDE VIEW



ISOMETRIC VIEW

TITLE: 2 FT. DIA. FIBERGLASS REINFORCED PLASTIC EXTENSION COLLAR		REV	DATE	DRAWN
PROJECT: WO:		1	SEPTEMBER 3, 2008	L. SIMKINS
		2		
		3		
		4		
		5		
		6		
		7		
		8		
		9		
		10		
DRAWN BY: LISA SIMKINS		SIZE	DWG. NO.	REV.
DRAWN DATE: OCTOBER 28, 2005		A	EC2	1
SCALE:varies		DO NOT SCALE DRAWING		SHEET 1 OF 1

greenturtle TM

877 428 8187 US 877 966 9444 CAN
www.greenturtletech.com