
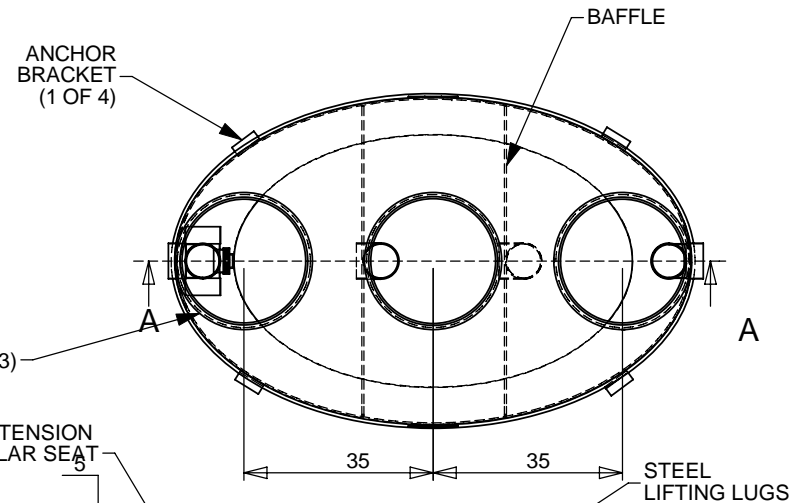


NOTES:

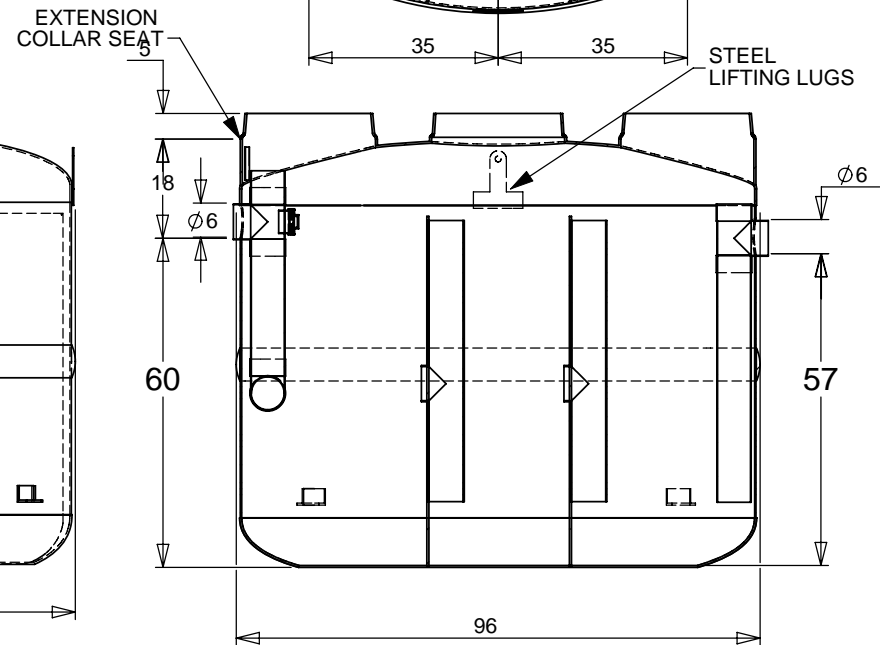
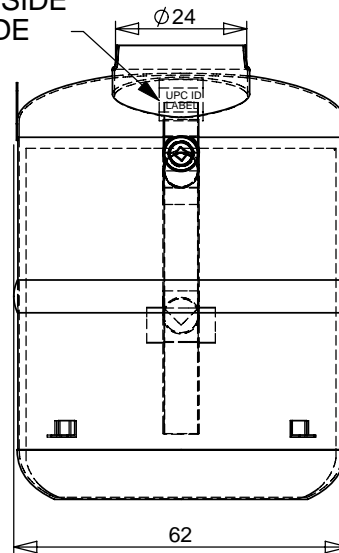
- FOR GRAVITY APPLICATIONS ONLY.
- ALL PROCEPTOR UNITS ARE MANUFACTURED WITH FIBERGLASS REINFORCED PLASTICS. PHYSICAL CHARACTERISTICS AND THICKNESS: POLYESTER RESIN AND E GLASS MINIMUM THICKNESS 1/4" WALL AND 3/8" TOP AND BOTTOM BOWLS. MINIMUM BURIAL DEPTH = 28" FOR NON TRAFFIC RATED AND MINIMUM BURIAL DEPTH = 36" FOR TRAFFIC RATED MAXIMUM BURIAL DEPTH = 7 FEET 6 INCHES (GRADE TO INVERT OF INLET) FOR DEEPER INSTALLATIONS CALL GREEN TURTLE FOR CUSTOM REINFORCEMENT
- ALL PROCEPTOR UNITS ARE TO BE INSTALLED IN ACCORDANCE WITH THE MANUFACTURERS INSTALLATION INSTRUCTION.
- STANDARD PIPE STUBS ARE SOCKET SDR 35 PVC SEWER MATERIAL (SCHEDULE 40 ADAPTORS ADDED FOR ALL PROJECTS IN USA).
- GMC/OMC 500 - 3000 UNITS COME STANDARD WITH 6" INLET AND OUTLET (OTHER CUSTOM SIZES AVAILABLE AT EXTRA CHARGE).
- EXTENSION COLLAR TO BE ORDERED TO MEET FINISHED GRADE, CUT ON SITE FOR FINAL ADJUSTMENT AND CAULKED WITH SIKAFLEX BY CONTRACTOR IF WATERTIGHT SEAL REQUIRED.
- COVERS AVAILABLE FOR H2O TRAFFIC LOADING, PEDESTRIAN LOADING OR ABOVE GROUND INSTALLATION.
- CONSULT GREEN TURTLE FOR OTHER SIZES.
- ALL PROCEPTOR UNITS ARE FACTORY TESTED.
- 30 YEAR WARRANTY AGAINST LEAKS, AND STRUCTURAL FAILURE.
- U.S. PATENT #5,746,912; CDN PATENT #2,195,822

US PAT. # 5746912	TM
Proceptor	
	
PROCEPTOR MODEL NUMBER:	OMC 1000 UPC
LIQUID CAPACITY (WORKING VOLUME):	1000 USG GAL.
MANUFACTURER:	GREEN TURTLE TECHNOLOGIES
STD. MAX BURIAL DEPTH TO TOP OF TANK:	6 FT.
MONTH/YEAR OF MANUFACTURE:	
BAR CODE	
TANK ID#	

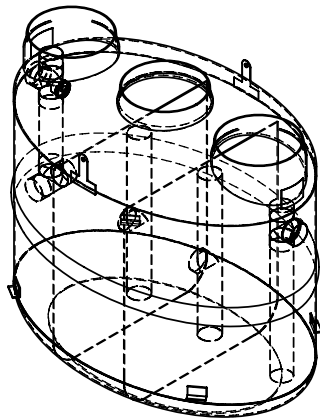
DETAIL "A"



DETAIL "A" LABEL INSIDE & OUTSIDE



SECTION A-A
SCALE 1 : 35



UPC/IAPMO APPROVED

TITLE: PROCEPTOR OIL SEPARATOR OMC 1000 UPC GALLON INTERCEPTOR 6" INLET & OUTLET 24" ACCESSWAY		REV	DATE	DRAWN
PROJECT: WO:		1	6/15/04	F. CHANDLER
✓ OPTIONS:		2	9/15/05	L. SIMKINS
OIL/GREASE SENSOR ALARM		3	12/20/05	L. SIMKINS
SUCTION PIPE FOR INDOOR INSTALLATION		4	DEC. 27, 2006	L. SIMKINS
COALESCER (FOR OIL ONLY) 10ppm TREATMENT		5	MAY 14, 2008	L. SIMKINS
DOUBLE WALL CONSTRUCTION		6		
OIL DRAW OFF PIPE TO CONNECT TO EXTERNAL OIL HOLDING TANK (FOR OIL ONLY)		7		
		8		
		9		
		10		
DRAWN BY: F. CHANDLER		SIZE DWG. NO.		
DATE DRAWN: 6/15/04		A OMC 1000 UPC		
		SCALE: 1:35 DO NOT SCALE DRAWING SHEET 1 OF 1		

ProceptorTM
by greenturtleTM

US 877 428 8187 CAN 877 966 9444
www.greenturtletech.com

REV. 5