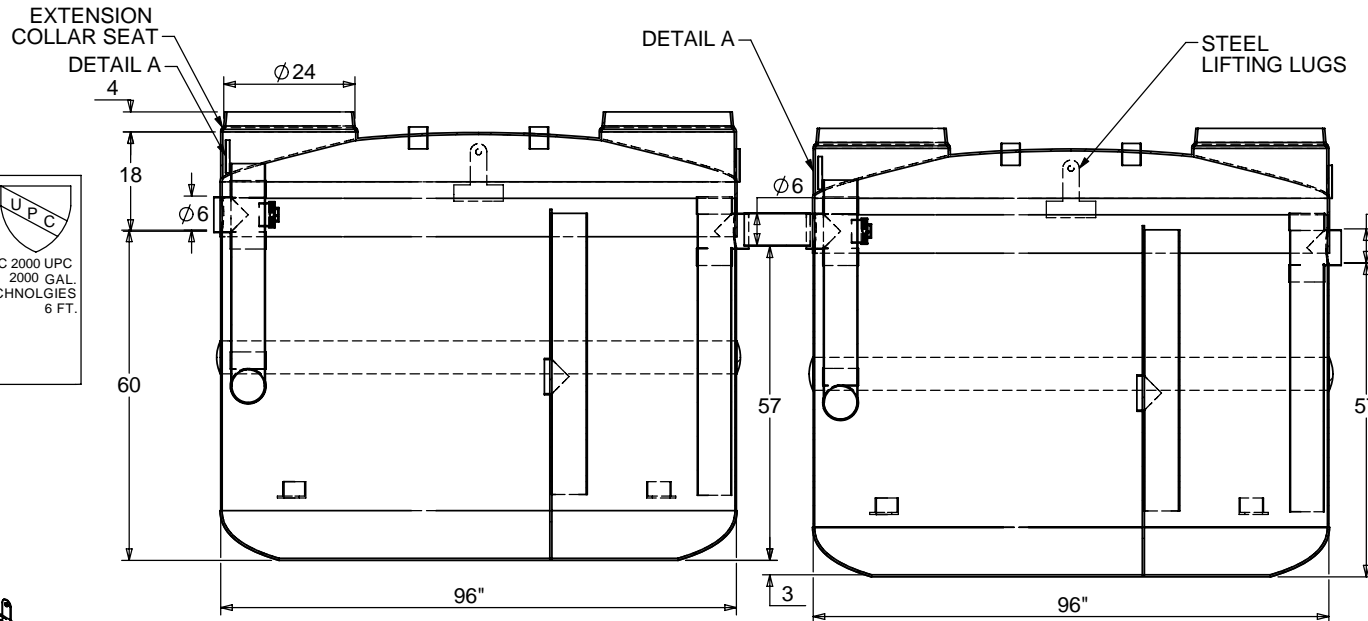
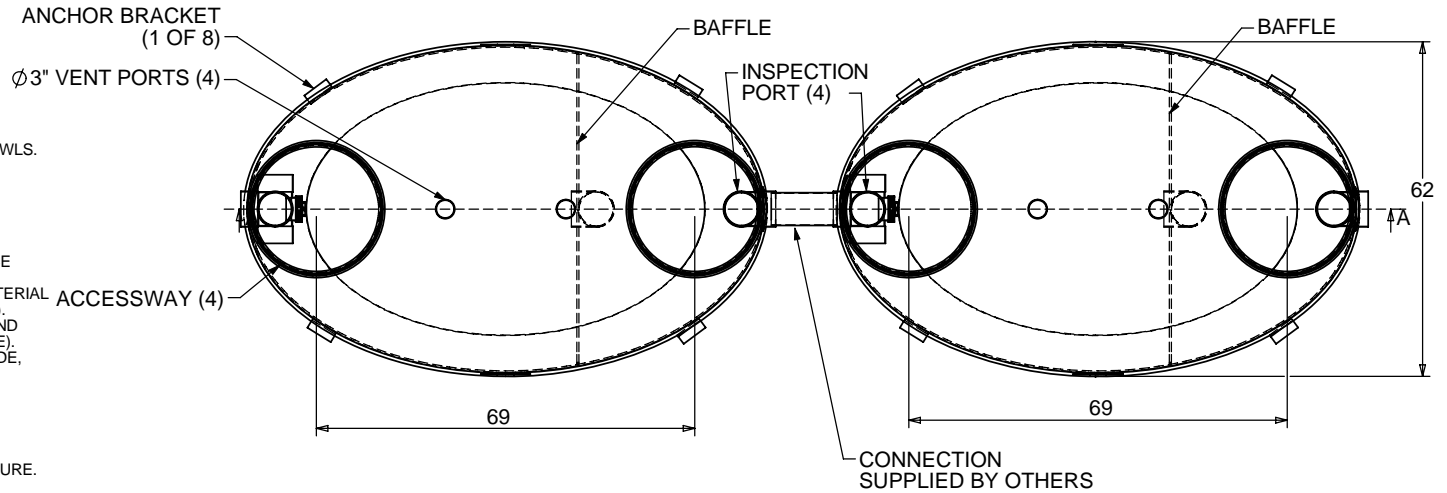


**NOTES:**

- FOR GRAVITY APPLICATIONS ONLY.
- ALL PROCEPTOR UNITS ARE MANUFACTURED WITH FIBERGLASS REINFORCED PLASTICS. PHYSICAL CHARACTERISTICS AND THICKNESS: POLYESTER RESIN AND E GLASS. MINIMUM THICKNESS 1/4" WALL AND 3/8" TOP AND BOTTOM BOWLS. MINIMUM BURIAL DEPTH = 28" FOR NON TRAFFIC RATED AND MINIMUM BURIAL DEPTH = 36" FOR TRAFFIC RATED. MAXIMUM BURIAL DEPTH = 7 FEET 6 INCHES (GRADE TO INVERT OF INLET) FOR DEEPER INSTALLATIONS CALL GREEN TURTLE FOR CUSTOM REINFORCEMENT
- ALL PROCEPTOR UNITS ARE TO BE INSTALLED IN ACCORDANCE WITH THE MANUFACTURERS INSTALLATION INSTRUCTION.
- STANDARD PIPE STUBS ARE SOCKET SDR 35 PVC SEWER MATERIAL (SCHEDULE 40 ADAPTORS ADDED FOR ALL PROJECTS IN USA).
- GMC/OMC 500 - 3000 UNITS COME STANDARD WITH 6" INLET AND OUTLET (OTHER CUSTOM SIZES AVAILABLE AT EXTRA CHARGE).
- EXTENSION COLLAR TO BE ORDERED TO MEET FINISHED GRADE, CUT ON SITE FOR FINAL ADJUSTMENT AND CAULKED WITH SIKAFLEX BY CONTRACTOR IF WATERTIGHT SEAL REQUIRED.
- COVERS AVAILABLE FOR H20 TRAFFIC LOADING, PEDESTRIAN LOADING OR ABOVE GROUND INSTALLATION.
- CONSULT GREEN TURTLE FOR OTHER SIZES.
- ALL PROCEPTOR UNITS ARE FACTORY TESTED.
- 30 YEAR WARRANTY AGAINST LEAKS, AND STRUCTURAL FAILURE.
- U.S. PATENT #5,746,912; CDN PATENT #2,195,822



SECTION A-A  
SCALE 1 : 35 FOR UPC/IAPMO INSTALLATIONS

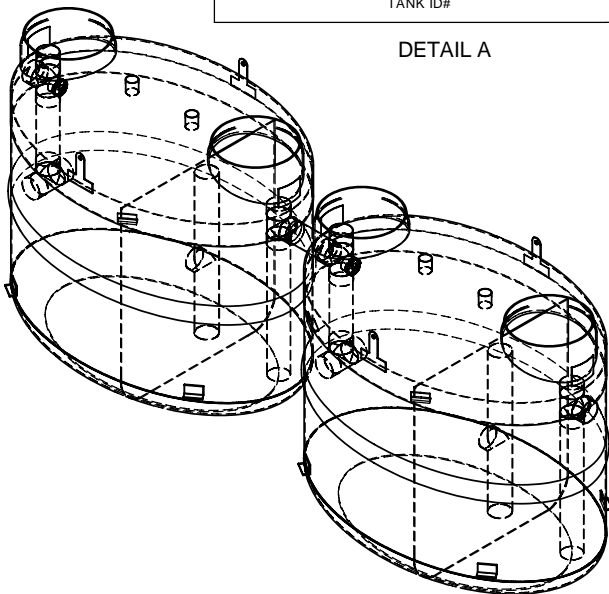
US PAT. # 5746912 TM

## Proceptor

PROCEPTOR MODEL NUMBER: GMC 2000 UPC  
LIQUID CAPACITY (WORKING VOLUME): 2000 GAL.  
MANUFACTURER: GREEN TURTLE TECHNOLOGIES  
STD. MAX BURIAL DEPTH TO TOP OF TANK: 6 FT.  
MONTH/YEAR OF MANUFACTURE:

BAR CODE  
TANK ID#

DETAIL A



TITLE: PROCEPTOR F.O.G. SEPARATOR		REV	DATE	DRAWN
GMC 2000 UPC GALLON INTERCEPTOR		1		
6\"/>				

TM

# Proceptor

by greenturtle

877 428 8187 US 877 966 9444 CAN  
www.greenturtletech.com

SIZE	DWG. NO.	REV.
<b>A</b>	GMC 2000 UPC	4

SCALE: 1:35 DO NOT SCALE DRAWING SHEET 1 OF 1